



www.marmotteetcie.com
877-94-VILLA - 450-776-1234

113 RUE LAVIOLETTE
BROMONT, QUÉBEC.

PHASE 2,
UNITÉ NO. 102
CONDO SUR 2 ÉTAGES

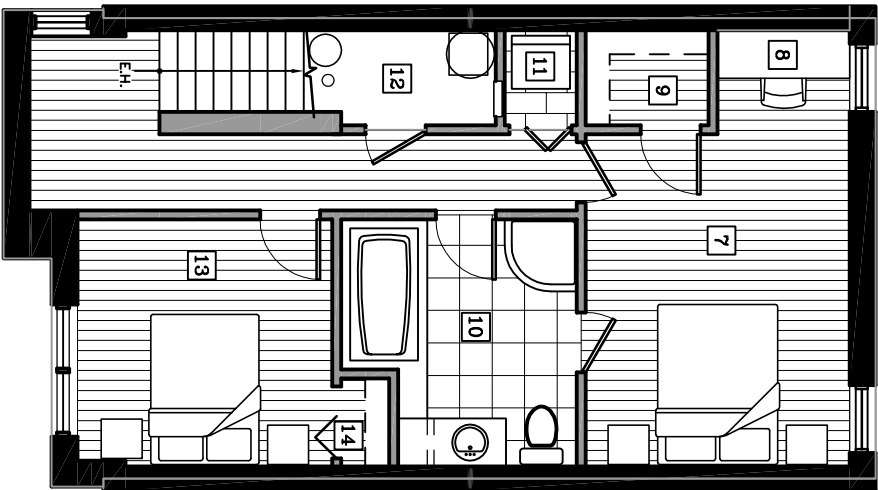
SUPERFICIE:

BRUT: 55: 680.17PI²

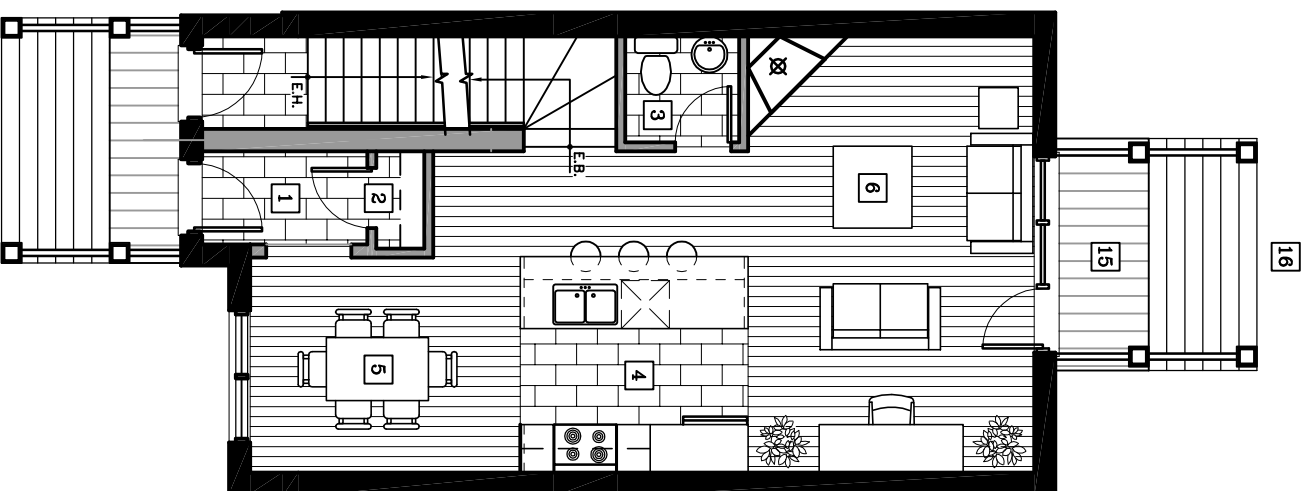
RDC: 628.25PI²

TOTAL : 1308.42PI²

BALCON: 38.00PI²
TERRAIN: ± 400PI²



PROJET MARMOTTE & CIE.
PLAN SOUS-SOL



PROJET MARMOTTE & CIE.
REZ-DE-CHAUSÉE

NOMENCLATURE	DIMENSIONS
1 ENTREE	3'-11" X 6'-11"
2 VESTIBARE	4'-1" X 2'-0"
3 SALLE D'EAU	4'-5" X 4'-9"
4 CUISINE	13'-5" X 9'-6"
5 SALLE A MANGER	9'-0" X 11'-3"
6 SALON/BUREAU	18'-2" X 12'-0"
7 CHAMBRE 1	13'-10" X 11'-0"
8 BUREAU	4'-4" X 5'-6"
9 WALK-IN	4'-0" X 5'-2"
10 SALLE DE BAIN	10'-4" X 9'-10"
11 BUANDERIE	4'-0" X 3'-0"
12 RANGEMENT	4'-0" X 11'-0"
13 CHAMBRE 2	10'-4" X 10'-7"
14 GARDE-ROBE	3'-8" X 2'-0"
15 BALCON	9'-8" X 4'-0"
16 TERRAIN	